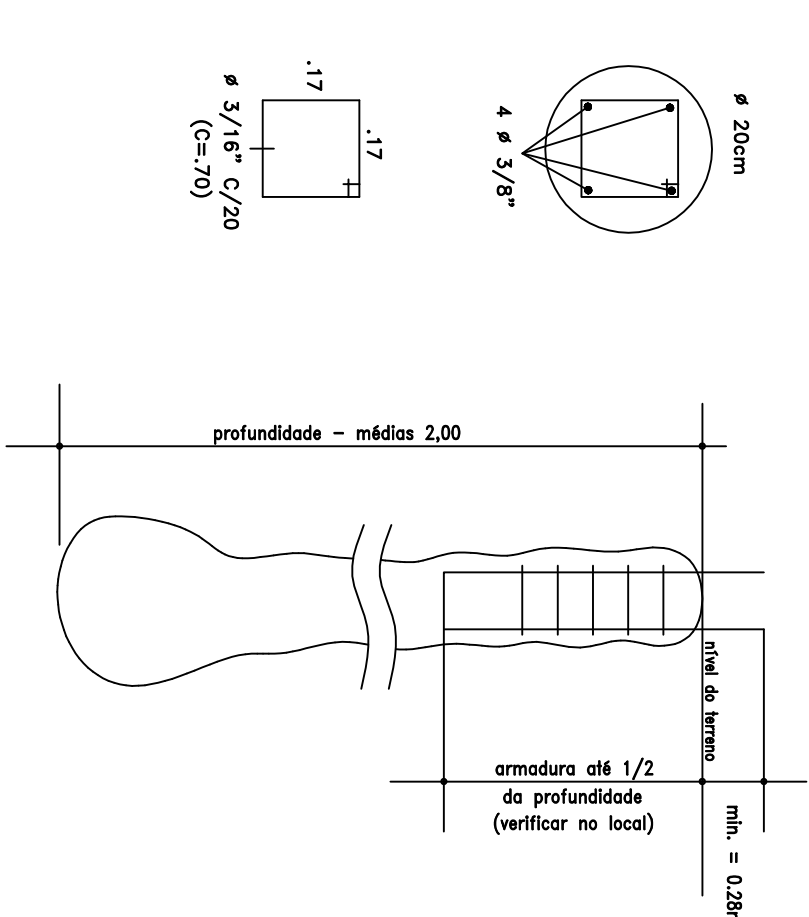


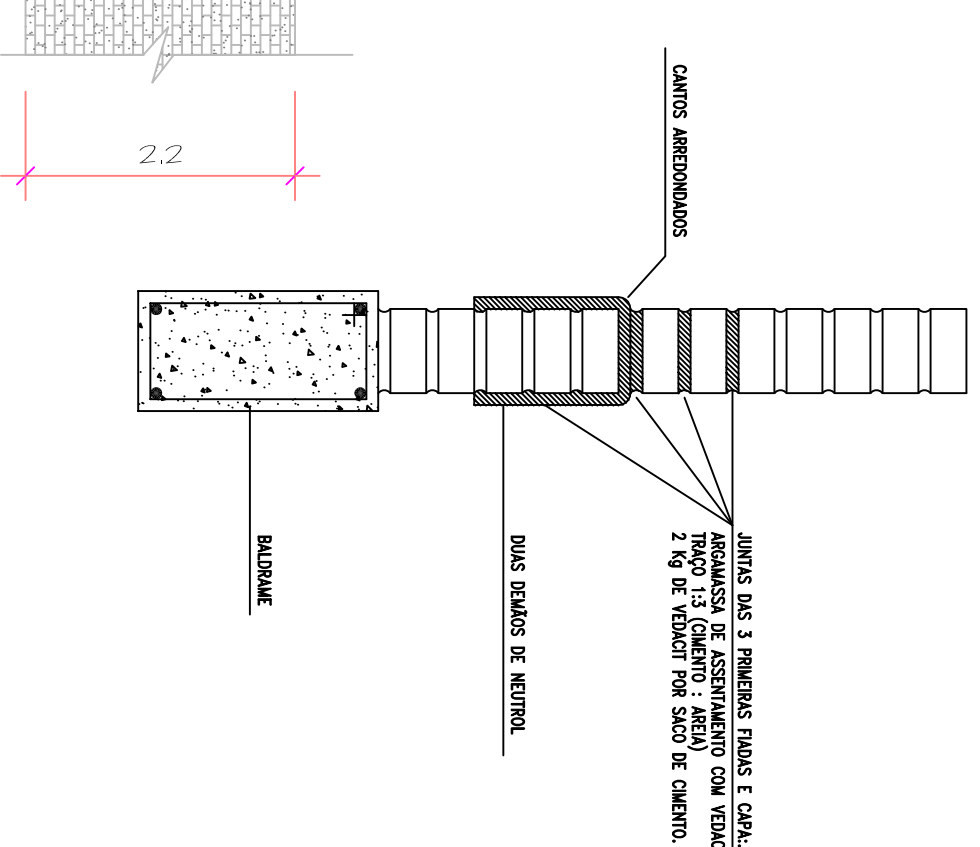
SITUAÇÃO SEM ESCALA

Technical drawing of a rectangular plate. The drawing shows two views: a top view (left) and a front view (right). The top view is a rectangle with dimensions 0.15 (width) and 0.30 (height). It features four holes, each with a diameter of $\phi 3/8"$. The holes are arranged in a square pattern, with the distance between the centers of adjacent holes being 0.15. The front view is a rectangle with dimensions 0.09 (width) and 0.26 (height). It features a single hole with a diameter of $\phi 3/8"$ and a center-to-face distance (C/F) of 0.94.

ESCALA 1:10



SEM ESCALA



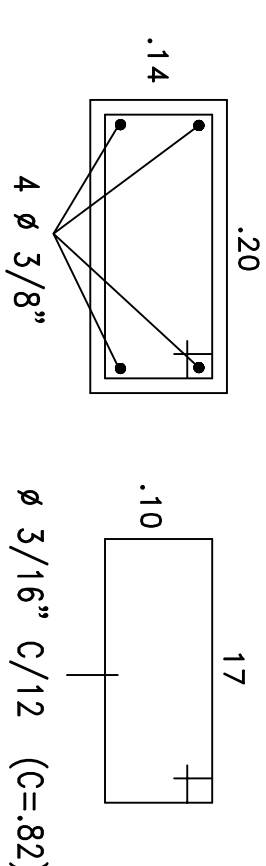
-
- Technical drawing of a rectangular frame. The frame consists of an outer rectangle and an inner rectangle. The width of the frame is labeled as 2 cm on the left side. The height of the frame is labeled as 2 cm on the right side. The frame is labeled with the word "VIGA" (Beam) and "ARMADURA" (Reinforcement) on the right side.

- TRAÇO CONCRETO – BROCCAS

- 01 SACO DE CIMENTO (50kg)
06 LATAS DE AREIA LAVADA MÉDIA (18 litros)
08 LATAS DE BRITA 1 (18 litros)
29 LITROS DE ÁGUA LIMPA

- TRAÇO CONCRETO — BALDRAMES E ESTRUTURA
- 01 SACO DE CIMENTO (50kg)
 - 05 LATAS DE AREIA LAVADA MÉDIA (18 litros)
 - 07 LATAS DE BRITA 1 (18 litros)
 - 30 LITROS DE ÁGUA LIMPA

PILARES

[illegible]

ASSUNTO:	PROJETO DE FUNDAÇÃO ESTRUTURA				
PROPR:	PREFEITURA MUNICIPAL				
LOCAL:	CENTENÁRIO MUNICIPAL				
TÍTULO:	LOCAÇÃO DE BROCA, E BALDRAMES				
ESCALA:	DATA:	WSTO:	DESCRIÇÃO:	QUANT:	
1:1000	08/08/2016		RENATO	1	
ARQUITO:	RENATO ALVES BOTEIHO				TIPO
					CAUSP A68216-0